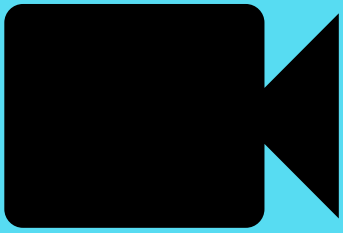


Synchronous Courses

TIPS WORKING WITH ASSIGNED SERVICE PROVIDERS

USING ZOOM VERSION 5.2.2 OR HIGHER

ENABLE LOCAL RECORDING



If you are planning to record lectures to post for future viewing, note ASL interpreters will not be captured. We can record from our end and send it to the student, only when Local Recording has been enabled *prior* to the Zoom session. How-to Guide below.

ASSIGN AS CO-HOST, WHY?

- Can use and assign **Multi-Pin** feature
 - allows ease of visual access to instructor, slides, interpreting team, and student
 - providers can see students comments = effective class participation
- Less interruption to professors lecture



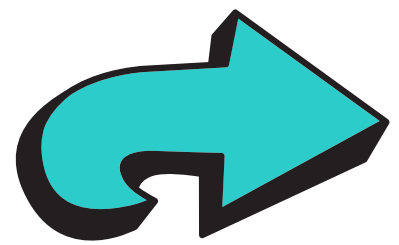
PLEASE WAIT ...



We are asking prior to lecturing we be given a few moments for all parties to locate each other to allow for effective visual communication.

NOTES:

- Accommodations are approved case by case
- Accurate captioning = Access
- ASL interpretation = Accommodation
 - *captioning does not negate the use of ASL**
- Video recordings are based on accommodation approval, only shared with those eligible.



Considerations



- Student eye gaze; to interpreter or captions, to shared screen, back to the interpreter
- Mute all participants = less background noise
- Utilize raise hand feature = clearer turn taking
- Hide nonvideo participants = will reduce number of screens on display and lower band with used.

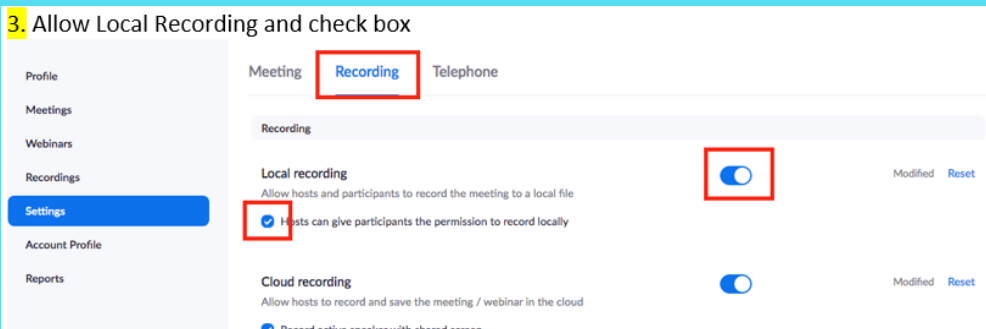
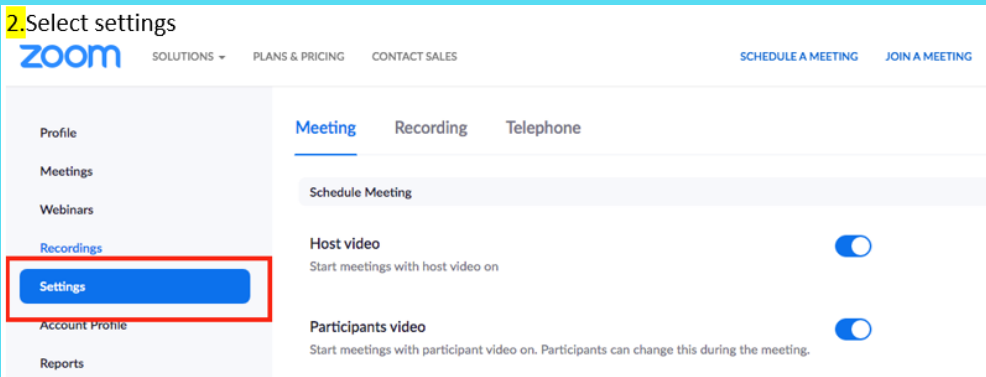
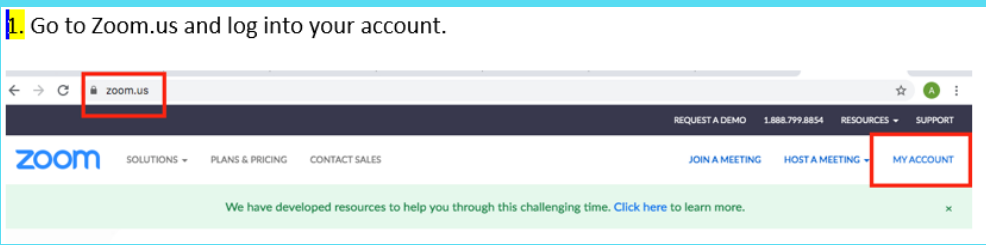
ANY QUESTIONS PLEASE CONTACT DSPS



STEPHANIE BONALES
SBONALES@LBCC.EDU
(562) 938-4918

HOW-TO GUIDES BELOW:

How to Enable Local Recording:



How to video;
Enable Automatic Transcript for **Cloud** Recordings